

Landscaping General Arrangement





BUSCONNECTS DUBLIN

CORE BUS CORRIDORS INFRASTRUCTURE WORKS

CLONGRIFFIN TO CITY CENTRE CORE BUS CORRIDOR SCHEME

LANDSCAPING GENERAL ARRANGEMENT

DRAWING SERIES NUMBER(S)

BCIDA-ACM-ENV_IX-0001_XX_00-DR-LL-0001

BCIDA-ACM-ENV_KP-0001_XX_00-DR-LL-0001

BCIDA-ACM-ENV_LA-0001_XX_00-DR-LL-0006 to 0021

DRAWING SERIES DESCRIPTION

CLONGRIFFIN TO CITY CENTRE CORE BUS CORRIDOR SCHEME. LANDSCAPING GENERAL ARRANGEMENT. COVER SHEET

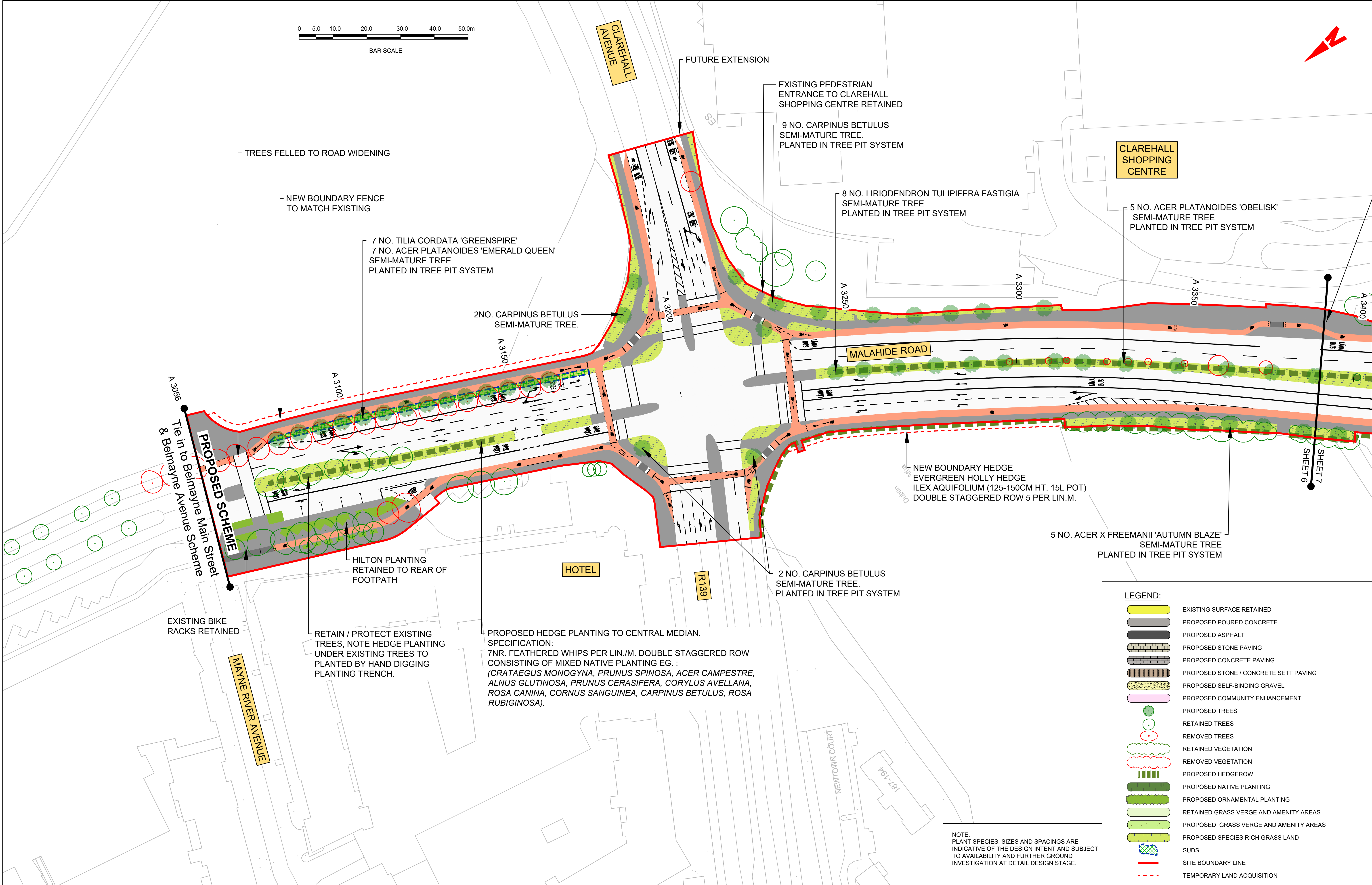
CLONGRIFFIN TO CITY CENTRE CORE BUS CORRIDOR SCHEME. LANDSCAPING GENERAL ARRANGEMENT. KEY PLAN

CLONGRIFFIN TO CITY CENTRE CORE BUS CORRIDOR SCHEME. LANDSCAPING GENERAL ARRANGEMENT

C:\users\zak4\2254\appdata\local\projectwise\workdir\mot-gb-pw-03\4029854\BCIDA-ACM-ENV_IX-0001_XX_00-DR-LL-0001.dwg

<div>Disclaimer</div> <div><div>a. © National Transport Authority (NTA) 2021. This drawing is confidential and the copyright in it is owned by NTA. This drawing must not be either loaned, copied or otherwise reproduced in whole or in part or used for any purpose without the prior permission of NTA.</div><div>b. This drawing is to be used for the design element identified in the titleblock. Other information shown is to be considered indicative only. The drawing is to be read in conjunction with all other relevant design drawings.</div><div>c. O.S. data used for plans are printed under © Ordnance Survey Ireland Government of Ireland. All rights reserved. Licence Number 2021/OSI_NMA_180 National Transport Authority. All elevations are in metres and relate to OSI Geoid Model (OSGM15) Mean Head. All Co-ordinates are in Irish</div></div>			<div>Transverse Mercator Grid (ITM) as defined by OSI active local GPS station.</div> <div><div>d. Information concerning the position of apparatus shown on this drawing is based on drawings supplied by the utility owners and/or the utility works contractor, whilst every care has been taken in the preparation of this drawing, positions should be taken as approximate and are intended for general guidance only and no representation is made by the NTA as to the accuracy, completeness, sufficiency or otherwise of this drawing and the position of the apparatus. The information contained herein does not purport to be comprehensive or final as the apparatus is subject to being altered and/or superceded. Recipients should not rely on this information. Any liabilities are hereby expressly disclaimed.</div></div>			<div>The information contained herein has been provided by the NTA but does not purport to be comprehensive or final. Recipients should not rely on the information. Neither the NTA nor any of its directors, officers, employees, agents, stakeholders or advisers make any representation or warranty as to, or accept any liability or responsibility in relation to, the adequacy, accuracy, reasonableness or completeness of the information provided as part of this document or any matter on which the information is based (including but not limited to loss or damage arising as a result of reliance by recipients on the information or any part of it). Any liabilities are hereby expressly disclaimed.</div>			<div><div><div><div><div><div></div><div>Rev</div><div>Date</div><div>Drn</div><div>Chk'd</div><div>App'd</div><div>Description</div></div></div><div><div>M01</div><div>03/12/21</div><div>JN</div><div>JH</div><div>CA</div><div>ISSUE FOR PHASE 4: PLANNING</div></div></div></div></div>			<div><div><div><div><div></div><div>Client</div><div><div><div><div></div><div>NTA</div><div>Údarás Náisiúnta Iompair</div><div>National Transport Authority</div></div></div></div><div><div>Date</div><div>03/12/21</div></div><div><div>Scale</div><div>NTS</div></div><div><div>@ A1</div><div>NTS</div><div>@ A3</div></div></div><div><div><div>Drawn</div><div>J.NELSON</div></div><div><div>Checked</div><div>J.HAWE</div></div><div><div>Approved</div><div>C.ACTON</div></div></div></div></div></div>			<div><div><div><div><div></div><div>Engineering Designer</div><div><div><div><div></div><div>AECOM</div><div>M</div><div>MOTT MACDONALD</div></div></div></div><div><div>Project Code</div><div>BCIDA</div></div><div><div>Originator Code</div><div>ACM</div></div><div><div>QMS Code</div><div></div></div></div></div></div></div>			<div><div><div><div><div></div><div>Programme Title</div><div>BUSCONNECTS DUBLIN</div><div>CORE BUS CORRIDORS INFRASTRUCTURE WORKS</div></div></div><div><div><div><div></div><div>Drawing Title</div><div>CLONGRIFFIN TO CITY CENTRE CORE BUS CORRIDOR SCHEME</div><div>LANDSCAPING GENERAL ARRANGEMENT</div><div>COVER SHEET</div></div></div><div><div><div><div></div><div>Drawing File Name</div><div>BCIDA-ACM-ENV_IX-0001_XX_00-DR-LL-0001</div></div><div><div><div>Sheet Number</div><div>01 of 01</div></div><div><div>Status</div><div>A</div></div><div><div>Rev</div><div>M01</div></div></div></div></div></div></div></div>			
--	--	--	--	--	--	--	--	--	--	--	--	--	--	--	---	--	--	--	--	--	--

DO NOT SCALE USE FIGURED DIMENSIONS ONLY



<div>Disclaimer</div> <div>a. © National Transport Authority (NTA) 2021. This drawing is confidential and the copyright in it is owned by NTA. This drawing must not be either loaned, copied or otherwise reproduced in whole or in part or used for any purpose without the prior permission of NTA.</div> <div>b. This drawing is to be used for the design element identified in the titlebox. Other information shown is to be considered indicative only. The drawing is to be read in conjunction with all other relevant design drawings.</div> <div>c. O.S. data used for plans are printed under © Ordnance Survey Ireland Government of Ireland. All rights reserved. Licence Number 2021/OSI_NMA_180 National Transport Authority. All elevations are in metres and relate to OSI Geoid Model (OSGM15) Main Head. All Co-ordinates are in Irish Transverse Mercator Grid (ITM) as defined by OSI active local GPS station.</div> <div>d. Information concerning the position of apparatus shown on this drawing is based on drawings supplied by the utility owners and/or the utility works contractor, whilst every care has been taken in the preparation of this drawing, positions should be taken as approximate and are intended for general guidance only and no representation is made by the NTA as to the accuracy, completeness, sufficiency or otherwise of this drawing and the position of the apparatus. The information contained herein does not purport to be comprehensive or final as the apparatus is subject to being altered and/or superceded. Recipients should not rely on this information. Any liabilities are hereby expressly disclaimed.</div> <div>e. The information contained herein has been provided by the NTA but does not purport to be comprehensive or final. Recipients should not rely on the information. Neither the NTA nor any of its directors, officers, employees, agents, stakeholders or advisers make any representation or warranty as to, or accept any liability or responsibility in relation to, the adequacy, accuracy, reasonableness or completeness of the information provided as part of this document or any matter on which the information is based (including but not limited to loss or damage arising as a result of reliance by recipients on the information or any part of it). Any liabilities are hereby expressly disclaimed.</div>										<div><div><div><div><div><div></div><div>Rev</div></div><div><div>Date</div></div></div><div><div>Drm</div></div><div><div>Chk'd</div></div><div><div>App'd</div></div></div><div><div>Description</div></div></div><div><div>M01</div><div>03/12/21</div><div>JN</div><div>JH</div><div>CA</div><div>ISSUE FOR PHASE 4: PLANNING</div></div></div>					<div>Client</div> <div><div><div><div><div></div><div>NTA</div><div>Údará Náisiúnta Iompair</div><div>National Transport Authority</div></div></div></div></div>			<div>Engineering Designer</div> <div><div><div><div><div></div><div>AECOM</div></div><div><div>M</div><div>MOTT MACDONALD</div></div></div></div></div>			<div>Programme Title</div> <div>BUSCONNECTS DUBLIN</div> <div>CORE BUS CORRIDORS INFRASTRUCTURE WORKS</div> <div>Drawing Title</div> <div>CLONGRIFFIN TO CITY CENTRE CORE BUS CORRIDOR SCHEME</div> <div>LANDSCAPING GENERAL ARRANGEMENT</div> <div>Drawing File Name</div> <div>BCIDA-ACM-ENV_LA-0001_XX_00-DR-LL-0006</div> <div>Sheet Number</div> <div>06 of 21</div> <div>Status</div> <div>A</div> <div>Rev</div> <div>M01</div>				
--	--	--	--	--	--	--	--	--	--	---	--	--	--	--	--	--	--	---	--	--	--	--	--	--	--



PROPOSED DRAINAGE NETWORK
DISCHARGE TO EXISTING ROAD DRAINAGE
NETWORK DN300

3 NO. CARPINUS BETULUS
SEMI-MATURE TREE.
PLANTED IN TREE PIT SYSTEM

SPECIES RICH
GRASSLAND

4 NO. PRUNUS AVIUM 'PLENA'
SEMI-MATURE TREE.
PLANTED IN TREE PIT SYSTEM

PROPOSED RAIN GARDEN (SUDS) FOR SURFACE WATER
COLLECTION.
PLANTING OF ORNAMENTAL GRASSES, HERBACEOUS
PLANTS, GROUND COVER SHRUBS, TOLERANT OF WATER
INUNDATION AND DROUGHT. (EG. VERONICASTRUM,
ASTER, RUDBECKIA, HELLEBORUS, CROCOSMIA, AJUGA,
INULA, CAMPANULA, IRIS, JUNCUS, CAREX, MISCANTHIS,
PANICUM, OSMUNDA, DRYOPTERIS).

EXISTING BOUNDARY TREATMENT RETAINED

EXISTING STREET TREES PROTECTED.
PAVING IN ROOT PROTECTION ZONE (RPA)
TO BE LAID ON ROOT CELL SYSTEM.

3 NO. CARPINUS BETULUS
SEMI MATURE TREES

NEW BOUNDARY HEDGE
EVERGREEN HOLLY HEDGE
ILEX AQUIFOLIUM (125-150CM HT. 15L POT)
DOUBLE STAGGERED ROW 5 PER LIN.M.

3 NO. SALIX ALBA
STANDARD SIZED TREES
TOLERANT FOR WATERLOGGED SOILS

SPECIES RICH GRASSLAND
FOR POLLINATOR DIVERSITY
AND SEASONAL VARIETY AND COLOUR.
TO INCLUDE SPRING BULBS

WOODLAND COPSES:
7 NO. BETULA PENDULA
9 NO. ALNUS GLUTINOSA
9 NO. SALIX ALBA
STANDARD SIZED TREES
UNDERPLANTED WITH SPRING BULBS

7 NO. BETULA PENDULA
STANDARD SIZED TREES
WOODLAND CLUSTER
UNDERPLANTED WITH SPRING BULBS

LEGEND:

- EXISTING SURFACE RETAINED
- PROPOSED POURED CONCRETE
- PROPOSED ASPHALT
- PROPOSED STONE PAVING
- PROPOSED CONCRETE PAVING
- PROPOSED STONE / CONCRETE SETT PAVING
- PROPOSED SELF-BINDING GRAVEL
- PROPOSED COMMUNITY ENHANCEMENT
- PROPOSED TREES
- RETAINED TREES
- REMOVED TREES
- RETAINED VEGETATION
- REMOVED VEGETATION
- PROPOSED HEDGEROW
- PROPOSED NATIVE PLANTING
- PROPOSED ORNAMENTAL PLANTING
- RETAINED GRASS VERGE AND AMENITY AREAS
- PROPOSED GRASS VERGE AND AMENITY AREAS
- PROPOSED SPECIES RICH GRASS LAND
- SUDS
- SITE BOUNDARY LINE
- TEMPORARY LAND ACQUISITION

NOTE:
PLANT SPECIES, SIZES AND SPACINGS ARE
INDICATIVE OF THE DESIGN INTENT AND SUBJECT
TO AVAILABILITY AND FURTHER GROUND
INVESTIGATION AT DETAIL DESIGN STAGE.

Disclaimer
a. © National Transport Authority (NTA) 2021. This drawing is confidential and the copyright in it is owned by NTA. This drawing must not be either loaned, copied or otherwise reproduced in whole or in part or used for any purpose without the prior permission of NTA.
b. This drawing is to be used for the design element identified in the titlebox. Other information shown is to be considered indicative only. The drawing is to be read in conjunction with all other relevant design drawings.
c. O.S. data used for plans are printed under © Ordnance Survey Ireland Government of Ireland. All rights reserved. Licence Number 2021/OSI, NMA, 180 National Transport Authority. All elevations are in metres and relate to OSI Geoid Model (OSGM15) Mean Head. All Co-ordinates are in Irish Transverse Mercator Grid (ITM) as defined by OSI active local GPS station.
d. Information concerning the position of apparatus shown on this drawing is based on drawings supplied by the utility owners and/or the utility works contractor, whilst every care has been taken in the preparation of this drawing, positions should be taken as approximate and are intended for general guidance only and no representation is made by the NTA as to the accuracy, completeness, sufficiency or otherwise of this drawing and the position of the apparatus. The information contained herein does not purport to be comprehensive or final as the apparatus is subject to being altered and/or superceded. Recipients should not rely on this information. Any liabilities are hereby expressly disclaimed.
e. The information contained herein has been provided by the NTA but does not purport to be comprehensive or final. Recipients should not rely on the information. Neither the NTA nor any of its directors, officers, employees, agents, stakeholders or advisers make any representation or warranty as to, or accept any liability or responsibility in relation to, the adequacy, accuracy, reasonableness or completeness of the information provided as part of this document or any matter on which the information is based (including but not limited to loss or damage arising as a result of reliance by recipients on the information or any part of it). Any liabilities are hereby expressly disclaimed.



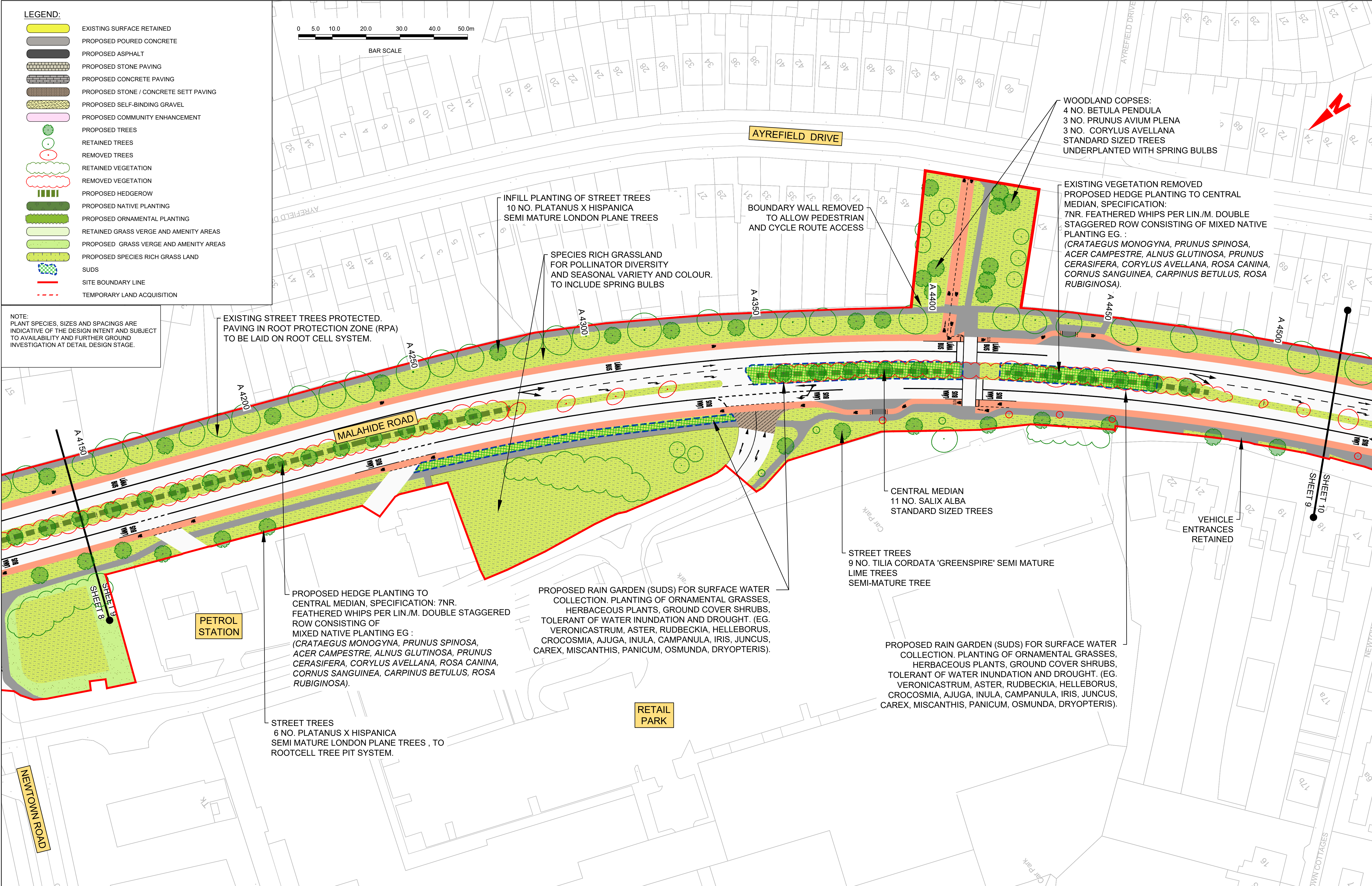
Rev	Date	Dm	Chk'd	App'd	Description
M01	03/12/21	JN	JH	CA	ISSUE FOR PHASE 4: PLANNING

NTA Údarás Náisiúnta Iompair National Transport Authority	
Date 03/12/21	Scale 1:500 @ A1 1:1000 @ A3
Project Code BCIDA	Originator Code ACM

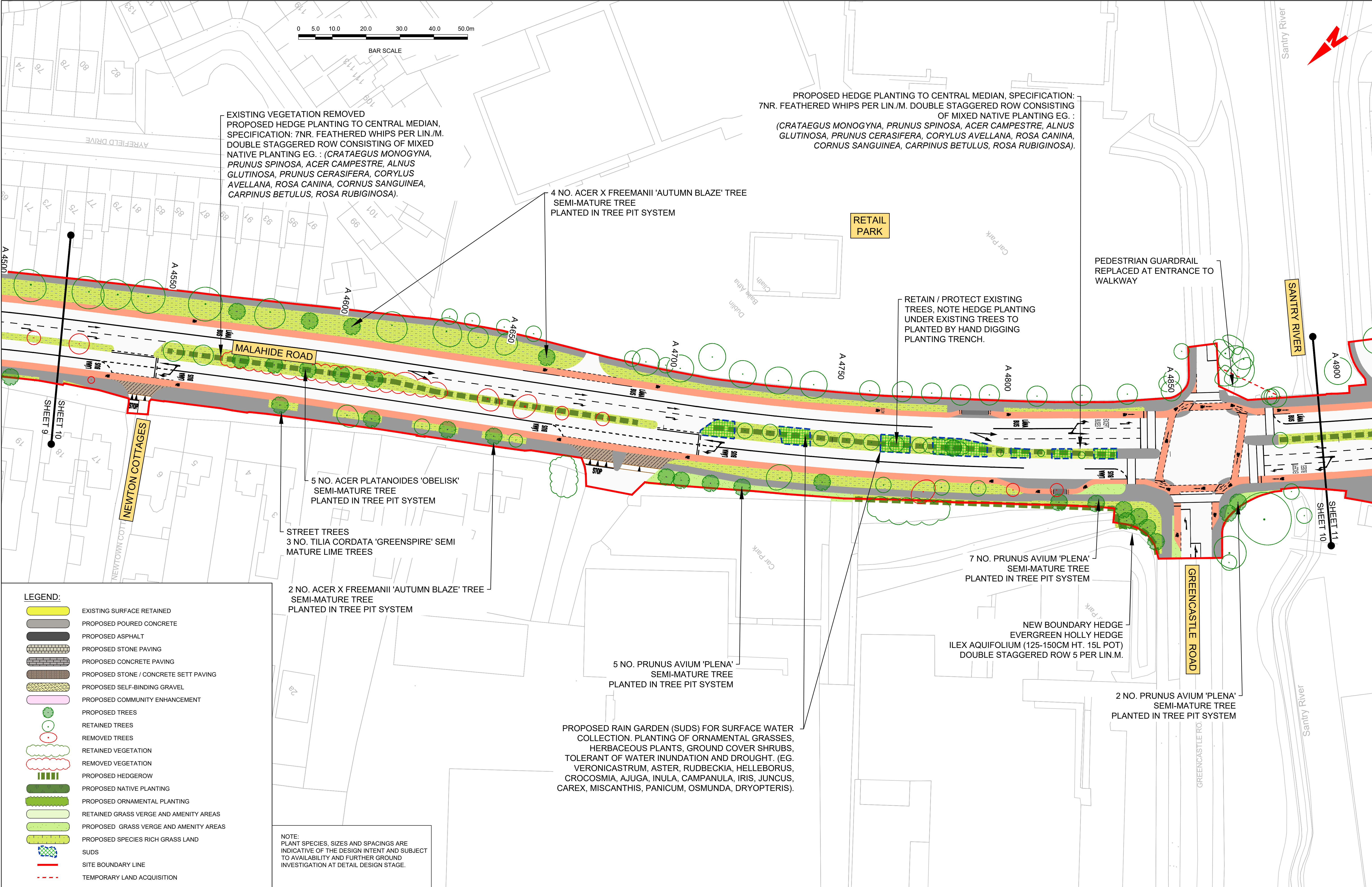
Engineering Designer AECOM MOTT MACDONALD	
Drawn J.NELSON	Checked J.HAWE
Approved C.ACTON	
QMS Code	

Programme Title BUSCONNECTS DUBLIN CORE BUS CORRIDORS INFRASTRUCTURE WORKS			
Drawing Title CLONGRIFFIN TO CITY CENTRE CORE BUS CORRIDOR SCHEME LANDSCAPING GENERAL ARRANGEMENT			
Drawing File Name BCIDA-ACM-ENV_LA-0001_XX_00-DR-LL-0007	Sheet Number 07 of 21	Status A	Rev M01

DO NOT SCALE USE FIGURED DIMENSIONS ONLY



<div>Disclaimer</div> <div>a. © National Transport Authority (NTA) 2021. This drawing is confidential and the copyright in it is owned by NTA. This drawing must not be either loaned, copied or otherwise reproduced in whole or in part or used for any purpose without the prior permission of NTA.</div> <div>b. This drawing is to be used for the design element identified in the titleblock. Other information shown is to be considered indicative only. The drawing is to be read in conjunction with all other relevant design drawings.</div> <div>c. O.S. data used for plans are printed under © Ordnance Survey Ireland Government of Ireland. All rights reserved. Licence Number 2021/OSI_NMA_180 National Transport Authority. All elevations are in metres and relate to OSI Geoid Model (OSGM15) Mean Head. All Co-ordinates are in Irish Transverse Mercator Grid (ITM) as defined by OSI active local GPS station.</div> <div>d. Information concerning the position of apparatus shown on this drawing is based on drawings supplied by the utility owners and/or the utility works contractor, whilst every care has been taken in the preparation of this drawing, positions should be taken as approximate and are intended for general guidance only and no representation is made by the NTA as to the accuracy, completeness, sufficiency or otherwise of this drawing and the position of the apparatus. The information contained herein does not purport to be comprehensive or final as the apparatus is subject to being altered and/or superceded. Recipients should not rely on this information. Any liabilities are hereby expressly disclaimed.</div> <div>e. The information contained herein has been provided by the NTA but does not purport to be comprehensive or final. Recipients should not rely on the information. Neither the NTA nor any of its directors, officers, employees, agents, stakeholders or advisers make any representation or warranty as to, or accept any liability or responsibility in relation to, the adequacy, accuracy, reasonableness or completeness of the information provided as part of this document or any matter on which the information is based (including but not limited to loss or damage arising as a result of reliance by recipients on the information or any part of it). Any liabilities are hereby expressly disclaimed.</div>					<div><div><div><div><div><div></div><div></div><div></div><div></div><div></div></div><div></div><div></div><div></div><div></div></div><div></div><div></div><div></div><div></div><div></div></div><div></div><div></div><div></div><div></div><div></div></div><div></div><div></div><div></div><div></div><div></div></div> <div></div> <div></div> <div></div> <div></div> <div></div> <div></div> <div></div> <div></div> <div></div> <div></div> <div></div> <div></div> <div></div> <div></div> <div></div> <div></div> <div></div> <div></div> <div></div> <div></div> <div></div> <div></div> <div></div> <div></div> <div></div> <div></div> <div></div> <div></div> <div></div> <div></div> <div></div> <div></div> <div></div> <div></div> <div></div> <div></div> <div></div> <div></div> <div></div> <div></div> <div></div> <div></div> <div></div> <div></div> <div></div> <div></div> <div></div> <div></div> <div></div> <div></div> <div></div> <div></div> <div></div> <div></div> <div></div> <div></div> <div></div> <div></div> <div></div> <div></div> <div></div> <div></div> <div></div> <div></div> <div></div> <div></div> <div></div> <div></div> <div></div> <div></div> <div></div> <div></div> <div></div> <div></div> <div></div> <div></div> <div></div> <div></div> <div></div> <div></div> <div></div> <div></div> <div></div> <div></div> <div></div> <div></div> <div></div> <div></div> <div></div> <div></div> <div></div> <div></div> <div></div> <div></div> <div></div> <div></div> <div></div> <div></div> <div></div> <div></div> <div></div> <div></div> <div></div> <div></div> <div></div> <div></div> <div></div> <div></div> <div></div> <div></div> <div></div> <div></div> <div></div> <div></div> <div></div> <div></div> <div></div> <div></div> <div></div> <div></div> <div></div> <div></div> <div></div> <div></div> <div></div> <div></div> <div></div> <div></div> <div></div> <div></div> <div></div> <div></div> <div></div> <div></div> <div></div> <div></div> <div></div> <div></div> <div></div> <div></div> <div></div> <div></div> <div></div> <div></div> <div></div> <div></div> <div></div> <div></div> <div></div> <div></div> <div></div> <div></div> <div></div> <div></div> <div></div> <div></div> <div></div> <div></div> <div></div> <div></div> <div></div> <div></div> <div></div> <div></div> <div></div> <div></div> <div></div> <div></div> <div></div> <div></div> <div></div> <div></div> <div></div> <div></div> <div></div> <div></div> <div></div> <div></div> <div></div> <div></div> <div></div> <div></div> <div></div> <div></div> <div></div> <div></div> <div></div> <div></div> <div></div> <div></div> <div></div> <div></div> <div></div> <div></div> <div></div> <div></div> <div></div> <div></div> <div></div> <div></div> <div></div> <div></div> <div></div> <div></div> <div></div> <div></div> <div></div> <div></div> <div></div> <div></div> <div></div> <div></div> <div></div> <div></div> <div></div> <div></div> <div></div> <div></div> <div></div> <div></div> <div></div> <div></div> <div></div> <div></div> <div></div> <div></div> <div></div> <div></div> <div></div> <div></div> <div></div> <div></div> <div></div> <div></div> <div></div> <div></div> <div></div> <div></div> <div></div> <div></div> <div></div> <div></div> <div></div> <div></div> <div></div> <div></div> <div></div> <div></div> <div></div> <div></div> <div></div> <div></div> <div></div> <div></div> <div></div> <div></div> <div></div> <div></div> <div></div> <div></div> <div></div> <div></div> <div></div> <div></div> <div></div> <div></div> <div></div> <div></div> <div></div> <div></div> <div></div> <div></div> <div></div> <div></div> <div></div> <div></div> <div></div> <div></div> <div></div> <div></div> <div></div> <div></div> <div></div> <div></div> <div></div> <div></div> <div></div> <div></div> <div></div> <div></div> <div></div> <div></div> <div></div> <div></div> <div></div> <div></div> <div></div> <div></div> <div></div> <div></div> <div></div> <div></div> <div></div> <div></div> <div></div> <div></div> <div></div> <div></div> <div></div> <div></div> <div></div> <div></div> <div></div> <div></div> <div></div> <div></div> <div></div> <div></div> <div></div> <div></div> <div></div> <div></div> <div></div> <div></div> <div></div> <div></div> <div></div> <div></div> <div></div> <div></div> <div></div> <div></div> <div></div> <div></div> <div></div> <div></div> <div></div> <div></div> <div></div> <div></div> <div></div> <div></div> <div></div> <div></div> <div></div> <div></div> <div></div> <div></div> <div></div> <div></div> <div></div> <div></div> <div></div> <div></div> <div></div> <div></div> <div></div> <div></div> <div></div> <div></div> <div></div> <div></div> <div></div> <div></div> <div></div> <div></div> <div></div> <div></div> <div></div> <div></div> <div></div> <div></div> <div></div> <div></div> <div></div> <div></div> <div></div> <div></div> <div></div> <div></div> <div></div> <div></div> <div></div> <div></div> <div></div> <div></div> <div></div> <div></div> <div></div> <div></div> <div></div> <div></div> <div></div> <div></div> <div></div> <div></div> <div></div> <div></div> <div></div> <div></div> <div></div> <div></div> <div></div> <div></div> <div></div> <div></div> <div></div> <div></div> <div></div> <div></div> <div></div> <div></div> <div></div> <div></div> <div></div> <div></div> <div></div> <div></div> <div></div> <div></div> <div></div> <div></div> <div></div> <div></div> <div></div> <div></div> <div></div> <div></div> <div></div> <div></div> <div></div> <div></div> <div></div> <div></div> <div></div> <div></div> <div></div> <div></div> <div></div> <div></div> <div></div> <div></div> <div></div> <div></div> <div></div> <div></div> <div></div> <div></div> <div></div> <div></div> <div></div> <div></div> <div></div> <div></div> <div></div> <div></div> <div></div> <div></div> <div></div> <div></div> <div></div> <div></div> <div></div> <div></div> <div></div> <div></div> <div></div> <div></div> <div></div> <div></div> <div></div> <div></div> <div></div> <div></div> <div></div> <div></div> <div></div> <div></div> <div></div> <div></div> <div></div> <div></div> <div></div> <div></div> <div></div> <div></div> <div></div> <div></div> <div></div> <div></div> <div></div> <div></div> <div></div> <div></div> <div></div> <div></div> <div></div> <div></div> <div></div> <div></div> <div></div> <div></div> <div></div> <div></div> <div></div> <div></div> <div></div> <div></div> <div></div> <div></div> <div></div> <div></div> <div></div> <div></div> <div></div> <div></div> <div></div> <div></div> <div></div> <div></div> <div></div> <div></div> <div></div> <div></div> <div></div> <div></div> <div></div> <div></div> <div></div> <div></div> <div></div> <div></div> <div></div> <div></div> <div></div> <div></div> <div></div> <div></div> <div></div> <div></div> <div></div> <div></div> <div></div> <div></div> <div></div> <div></div> <div></div> <div></div> <div></div> <div></div> <div></div> <div></div> <div></div> <div></div> <div></div> <div></div> <div></div> <div></div> <div></div> <div></div> <div></div> <div></div> <div></div> <div></div> <div></div> <div></div> <div></div> <div></div> <div></div> <div></div> <div></div> <div></div> <div></div> <div></div> <div></div> <div></div> <div></div> <div></div> <div></div> <div></div> <div></div> <div></div> <div></div> <div></div> <div></div> <div></div> <div></div> <div></div> <div></div> <div></div> <div></div> <div></div> <div></div> <div></div> <div></div> <div></div> <div></div> <div></div> <div></div> <div></div> <div></div> <div></div> <div></div> <div></div> <div></div> <div></div> <div></div> <div></div> <div></div> <div></div> <div></div> <div></div> <div></div> <div></div> <div></div> <div></div> <div></div> <div></div> <div></div> <div></div> <div></div> <div></div> <div></div> <div></div> <div></div> <div></div> <div></div> <div></div> <div></div> <div></div> <div></div> <div></div> <div></div> <div></div> <div></div> <div></div> <div></div> <div></div> <div></div> <div></div> <div></div> <div></div> <div></div> <div></div> <div></div> <div></div> <div></div> <div></div> <div></div> <div></div> <div></div> <div></div> <div></div> <div></div> <div></div> <div></div> <div></div> <div></div> <div></div> <div></div> <div></div> <div></div> <div></div> <div></div> <div></div> <div></div> <div></div> <div></div> <div></div> <div></div> <div></div> <div></div> <div></div> <div></div> <div></div> <div></div> <div></div> <div></div> <div></div> <div></div> <div></div> <div></div> <div></div> <div></div> <div></div> <div></div> <div></div> <div></div> <div></div> <div></div> <div></div> <div></div> <div></div> <div></div> <div></div> <div></div> <div></div> <div></div> <div></div> <div></div> <div></div> <div></div> <div></div> <div></div> <div></div> <div></div> <div></div> <div></div> <div></div> <div></div> <div></div> <div></div> <div></div> <div></div> <div></div> <div></div> <div></div> <div></div> <div></div> <div></div> <div></div> <div></div> <div></div> <div></div> <div></div> <div></div> <div></div> <div></div> <div></div> <div></div> <div></div> <div></div> <div></div> <div></div> <div></div> <div></div> <div></div> <div></div> <div></div> <div></div> <div></div> <div></div> <div></div> <div></div> <div></div> <div></div> <div></div> <div></div> <div></div> <div></div> <div></div> <div></div> <div></div> <div></div> <div></div> <div></div> <div></div> <div></div> <div></div> <div></div> <div></div> <div></div> <div></div> <div></div> <div></div> <div></div> <div></div> <div></div> <div></div> <div></div> <div></div> <div></div> <div></div> <div></div> <div></div> <div></div> <div></div> <div></div> <div></div> <div></div> <div></div> <div></div> <div></div> <div></div> <div></div> <div></div> <div></div> <div></div> <div></div> <div></div> <div></div> <div></div> <div></div> <div></div> <div></div> <div></div> <div></div> <div></div> <div></div> <div></div> <div></div> <div></div> <div></div> <div></div> <div></</div>				
--	--	--	--	--	--	--	--	--	--



LEGEND:

- EXISTING SURFACE RETAINED
- PROPOSED POURED CONCRETE
- PROPOSED ASPHALT
- PROPOSED STONE PAVING
- PROPOSED CONCRETE PAVING
- PROPOSED STONE / CONCRETE SETT PAVING
- PROPOSED SELF-BINDING GRAVEL
- PROPOSED COMMUNITY ENHANCEMENT
- PROPOSED TREES
- RETAINED TREES
- REMOVED TREES
- RETAINED VEGETATION
- REMOVED VEGETATION
- PROPOSED HEDGEROW
- PROPOSED NATIVE PLANTING
- PROPOSED ORNAMENTAL PLANTING
- RETAINED GRASS VERGE AND AMENITY AREAS
- PROPOSED GRASS VERGE AND AMENITY AREAS
- PROPOSED SPECIES RICH GRASS LAND
- SUDS
- SITE BOUNDARY LINE
- TEMPORARY LAND ACQUISITION

NOTE:
PLANT SPECIES, SIZES AND SPACINGS ARE INDICATIVE OF THE DESIGN INTENT AND SUBJECT TO AVAILABILITY AND FURTHER GROUND INVESTIGATION AT DETAIL DESIGN STAGE.

Project Ireland 2040
Building Ireland's Future

Rev	Date	Dm	Chk'd	App'd	Description
M01	03/12/21	JN	JH	CA	ISSUE FOR PHASE 4: PLANNING

Client
NTA
Údarás Náisiúnta Iompair
National Transport Authority

Engineering Designer
AECOM
MOTT MACDONALD

Programme Title
BUSCONNECTS DUBLIN
CORE BUS CORRIDORS INFRASTRUCTURE WORKS

Drawing Title
CLONGRIFFIN TO CITY CENTRE CORE BUS CORRIDOR SCHEME
LANDSCAPING GENERAL ARRANGEMENT

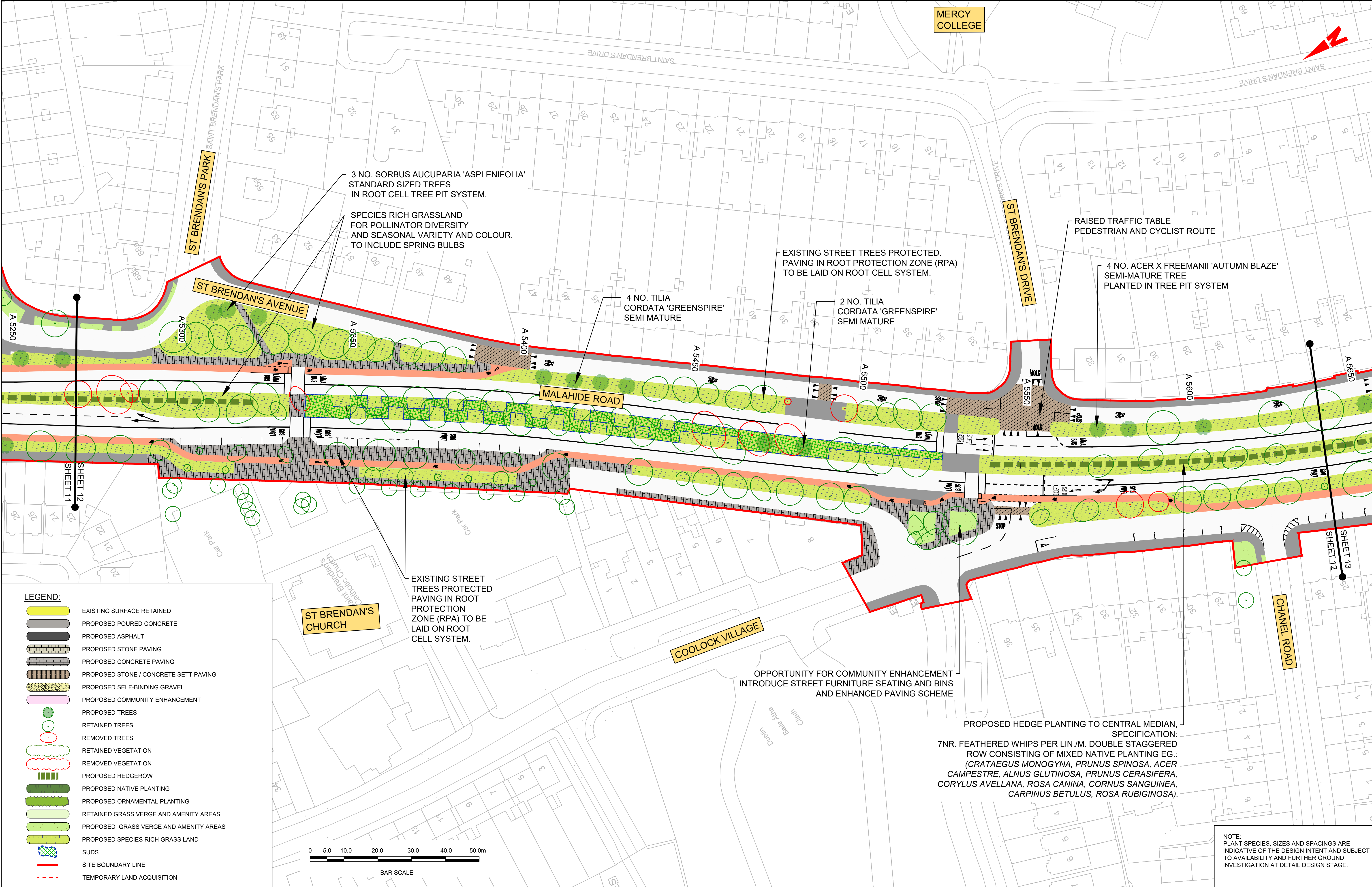
Drawing File Name
BCIDA-ACM-ENV_LA-0001_XX_00-DR-LL-0010

Sheet Number
10 of 21

Status
A

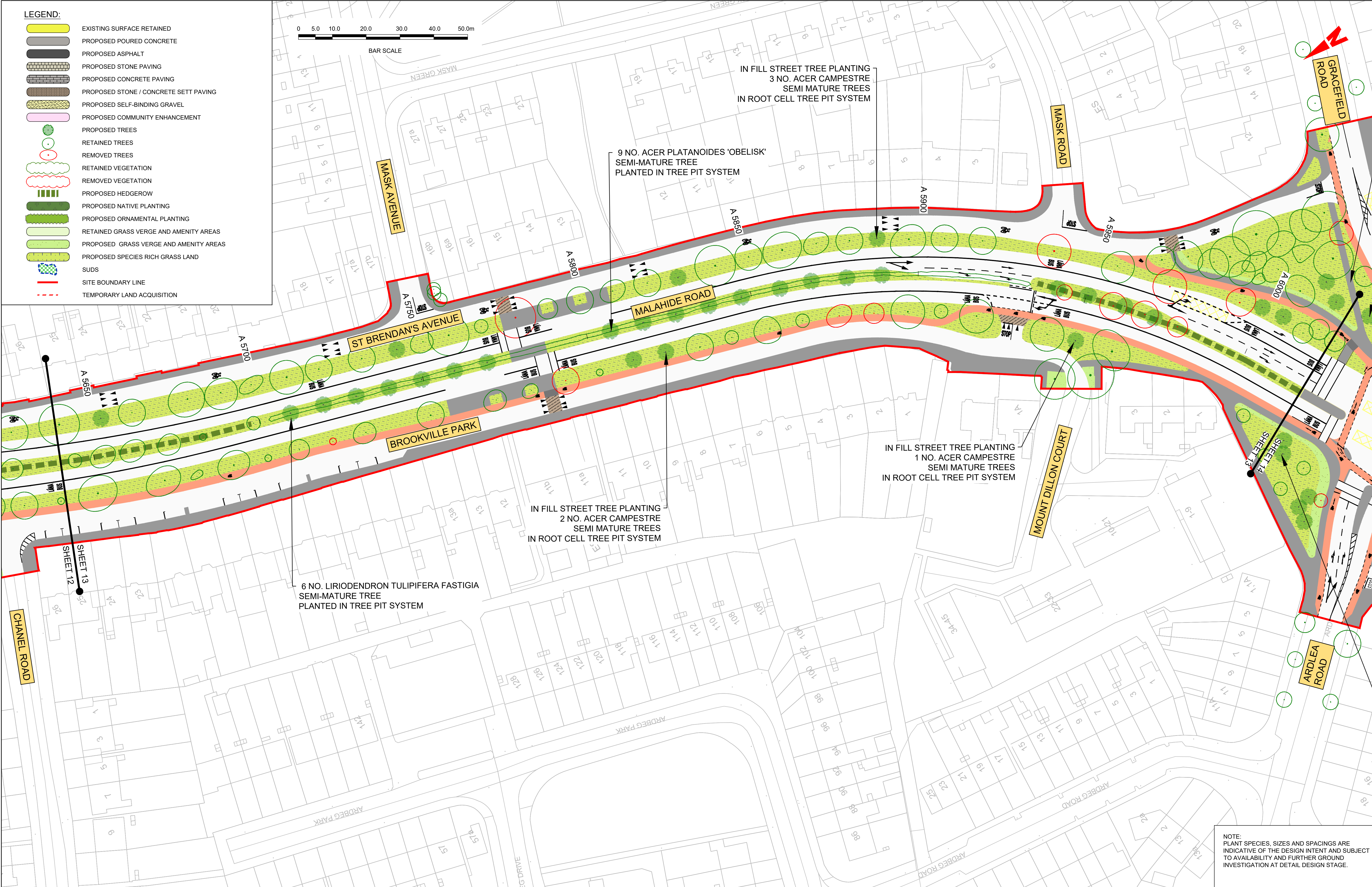
Rev
M01

DO NOT SCALE USE FIGURED DIMENSIONS ONLY



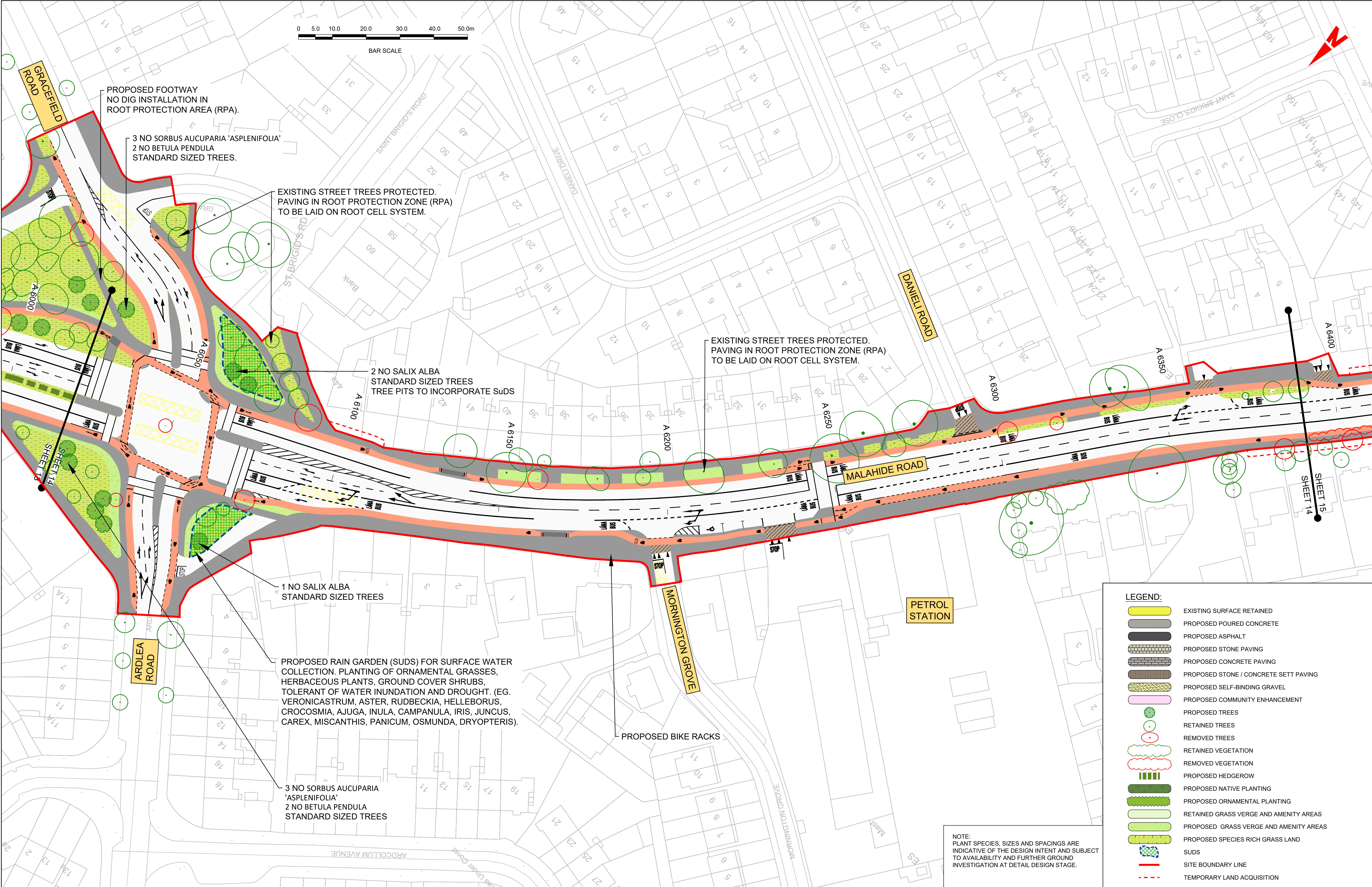
<div>Disclaimer</div> <div>a. © National Transport Authority (NTA) 2021. This drawing is confidential and the copyright in it is owned by NTA. This drawing must not be either loaned, copied or otherwise reproduced in whole or in part or used for any purpose without the prior permission of NTA.</div> <div>b. This drawing is to be used for the design element identified in the titlebox. Other information shown is to be considered indicative only. The drawing is to be read in conjunction with all other relevant design drawings.</div> <div>c. O.S. data used for plans are printed under © Ordnance Survey Ireland Government of Ireland. All rights reserved. Licence Number 2021/OSI, NMA, 180 National Transport Authority. All elevations are in metres and relate to OSI Geoid Model (OSGM15) Mean Head. All Co-ordinates are in Irish Transverse Mercator Grid (ITM) as defined by OSI active local GPS station.</div> <div>d. Information concerning the position of apparatus shown on this drawing is based on drawings supplied by the utility owners and/or the utility works contractor, whilst every care has been taken in the preparation of this drawing, positions should be taken as approximate and are intended for general guidance only and no representation is made by the NTA as to the accuracy, completeness, sufficiency or otherwise of this drawing and the position of the apparatus. The information contained herein does not purport to be comprehensive or final as the apparatus is subject to being altered and/or superseded. Recipients should not rely on this information. Any liabilities are hereby expressly disclaimed.</div> <div>e. The information contained herein has been provided by the NTA but does not purport to be comprehensive or final. Recipients should not rely on the information. Neither the NTA nor any of its directors, officers, employees, agents, stakeholders or advisers make any representation or warranty as to, or accept any liability or responsibility in relation to, the adequacy, accuracy, reasonableness or completeness of the information provided as part of this document or any matter on which the information is based (including but not limited to loss or damage arising as a result of reliance by recipients on the information or any part of it). Any liabilities are hereby expressly disclaimed.</div>						<div></div> <div>Project Ireland 2040</div> <div>Building Ireland's Future</div>		<table><tr><th>Rev</th><th>Date</th><th>Drm</th><th>Chk'd</th><th>App'd</th><th>Description</th></tr><tr><td>M01</td><td>04/12/21</td><td>JN</td><td>JH</td><td>CA</td><td>ISSUE FOR PHASE 4: PLANNING</td></tr></table>	Rev	Date	Drm	Chk'd	App'd	Description	M01	04/12/21	JN	JH	CA	ISSUE FOR PHASE 4: PLANNING	<div>Client</div> <div></div> <div>Údarás Náisiúnta Iompair National Transport Authority</div>	<div>Engineering Designer</div> <div></div> <div></div> <div>MOTT MACDONALD</div>	<div>Programme Title</div> <div>BUSCONNECTS DUBLIN CORE BUS CORRIDORS INFRASTRUCTURE WORKS</div> <div>Drawing Title</div> <div>CLONGRIFFIN TO CITY CENTRE CORE BUS CORRIDOR SCHEME LANDSCAPING GENERAL ARRANGEMENT</div> <div>Drawing File Name</div> <div>BCIDA-ACM-ENV_LA-0001_XX_00-DR-LL-0012</div> <div>Sheet Number</div> <div>12 of 21</div> <div>Status</div> <div>A</div> <div>Rev</div> <div>M01</div>
Rev	Date	Drm	Chk'd	App'd	Description																		
M01	04/12/21	JN	JH	CA	ISSUE FOR PHASE 4: PLANNING																		

DO NOT SCALE USE FIGURED DIMENSIONS ONLY



<div>Disclaimer</div> <div><div><div><div><div><div></div><div></div><div></div></div><div><div><div></div><div></div><div></div></div></div><div><div><div></div><div></div><div></div></div><div><div><div></div><div></div><div></div></div></div><div><div><div></div><div></div><div></div></div><div><div><div></div><div></div><div></div></div></div><div><div><div></div><div></div><div></div></div><div><div><div></div><div></div><div></div></div></div></div><div><div><div></div><div></div><div></div></div><div><div><div></div><div></div><div></div></div></div><div><div><div></div><div></div><div></div></div><div><div><div></div><div></div><div></div></div></div></div><div><div><div></div><div></div><div></div></div><div><div><div></div><div></div><div></div></div></div><div><div><div></div><div></div><div></div></div><div><div><div></div><div></div><div></div></div></div></div><div><div><div></div><div></div><div></div></div><div><div><div></div><div></div><div></div></div></div><div><div><div></div><div></div><div></div></div><div><div><div></div><div></div><div></div></div></div></div><div><div><div></div><div></div><div></div></div><div><div><div></div><div></div><div></div></div></div><div><div><div></div><div></div><div></div></div><div><div><div></div><div></div><div></div></div></div></div><div><div><div></div><div></div><div></div></div><div><div><div></div><div></div><div></div></div></div><div><div><div></div><div></div><div></div></div><div><div><div></div><div></div><div></div></div></div></div><div><div><div></div><div></div><div></div></div><div><div><div></div><div></div><div></div></div></div><div><div><div></div><div></div><div></div></div><div><div><div></div><div></div><div></div></div></div></div><div><div><div></div><div></div><div></div></div><div><div><div></div><div></div><div></div></div></div><div><div><div></div><div></div><div></div></div><div><div><div></div><div></div><div></div></div></div></div><div><div><div></div><div></div><div></div></div><div><div><div></div><div></div><div></div></div></div><div><div><div></div><div></div><div></div></div><div><div><div></div><div></div><div></div></div></div></div><div><div><div></div><div></div><div></div></div><div><div><div></div><div></div><div></div></div></div><div><div><div></div><div></div><div></div></div><div><div><div></div><div></div><div></div></div></div></div><div><div><div></div><div></div><div></div></div><div><div><div></div><div></div><div></div></div></div><div><div><div></div><div></div><div></div></div><div><div><div></div><div></div><div></div></div></div></div><div><div><div></div><div></div><div></div></div><div><div><div></div><div></div><div></div></div></div><div><div><div></div><div></div><div></div></div><div><div><div></div><div></div><div></div></div></div></div><div><div><div></div><div></div><div></div></div><div><div><div></div><div></div><div></div></div></div><div><div><div></div><div></div><div></div></div><div><div><div></div><div></div><div></div></div></div></div><div><div><div></div><div></div><div></div></div><div><div><div></div><div></div><div></div></div></div><div><div><div></div><div></div><div></div></div><div><div><div></div><div></div><div></div></div></div></div><div><div><div></div><div></div><div></div></div><div><div><div></div><div></div><div></div></div></div><div><div><div></div><div></div><div></div></div><div><div><div></div><div></div><div></div></div></div></div><div><div><div></div><div></div><div></div></div><div><div><div></div><div></div><div></div></div></div><div><div><div></div><div></div><div></div></div><div><div><div></div><div></div><div></div></div></div></div><div><div><div></div><div></div><div></div></div><div><div><div></div><div></div><div></div></div></div><div><div><div></div><div></div><div></div></div><div><div><div></div><div></div><div></div></div></div></div><div><div><div></div><div></div><div></div></div><div><div><div></div><div></div><div></div></div></div><div><div><div></div><div></div><div></div></div><div><div><div></div><div></div><div></div></div></div></div><div><div><div></div><div></div><div></div></div><div><div><div></div><div></div><div></div></div></div><div><div><div></div><div></div><div></div></div><div><div><div></div><div></div><div></div></div></div></div><div><div><div></div><div></div><div></div></div><div><div><div></div><div></div><div></div></div></div><div><div><div></div><div></div><div></div></div><div><div><div></div><div></div><div></div></div></div></div><div><div><div></div><div></div><div></div></div><div><div><div></div><div></div><div></div></div></div><div><div><div></div><div></div><div></div></div><div><div><div></div><div></div><div></div></div></div></div><div><div><div></div><div></div><div></div></div><div><div><div></div><div></div><div></div></div></div><div><div><div></div><div></div><div></div></div><div><div><div></div><div></div><div></div></div></div></div><div><div><div></div><div></div><div></div></div><div><div><div></div><div></div><div></div></div></div><div><div><div></div><div></div><div></div></div><div><div><div></div><div></div><div></div></div></div></div><div><div><div></div><div></div><div></div></div><div><div><div></div><div></div><div></div></div></div><div><div><div></div><div></div><div></div></div><div><div><div></div><div></div><div></div></div></div></div><div><div><div></div><div></div><div></div></div><div><div><div></div><div></div><div></div></div></div><div><div><div></div><div></div><div></div></div><div><div><div></div><div></div><div></div></div></div></div><div><div><div></div><div></div><div></div></div><div><div><div></div><div></div><div></div></div></div><div><div><div></div><div></div><div></div></div><div><div><div></div><div></div><div></div></div></div></div><div><div><div></div><div></div><div></div></div><div><div><div></div><div></div><div></div></div></div><div><div><div></div><div></div><div></div></div><div><div><div></div><div></div><div></div></div></div></div><div><div><div></div><div></div><div></div></div><div><div><div></div><div></div><div></div></div></div><div><div><div></div><div></div><div></div></div><div><div><div></div><div></div><div></div></div></div></div><div><div><div></div><div></div><div></div></div><div><div><div></div><div></div><div></div></div></div><div><div><div></div><div></div><div></div></div><div><div><div></div><div></div><div></div></div></div></div><div><div><div></div><div></div><div></div></div><div><div><div></div><div></div><div></div></div></div><div><div><div></div><div></div><div></div></div><div><div><div></div><div></div><div></div></div></div></div><div><div><div></div><div></div><div></div></div><div><div><div></div><div></div><div></div></div></div><div><div><div></div><div></div><div></div></div><div><div><div></div><div></div><div></div></div></div></div><div><div><div></div><div></div><div></div></div><div><div><div></div><div></div><div></div></div></div><div><div><div></div><div></div><div></div></div><div><div><div></div><div></div><div></div></div></div></div><div><div><div></div><div></div><div></div></div><div><div><div></div><div></div><div></div></div></div><div><div><div></div><div></div><div></div></div><div><div><div></div><div></div><div></div></div></div></div><div><div><div></div><div></div><div></div></div><div><div><div></div><div></div><div></div></div></div><div><div><div></div><div></div><div></div></div><div><div><div></div><div></div><div></div></div></div></div><div><div><div></div><div></div><div></div></div><div><div><div></div><div></div><div></div></div></div><div><div><div></div><div></div><div></div></div><div><div><div></div><div></div><div></div></div></div></div><div><div><div></div><div></div><div></div></div><div><div><div></div><div></div><div></div></div></div><div><div><div></div><div></div><div></div></div><div><div><div></div><div></div><div></div></div></div></div><div><div><div></div><div></div><div></div></div><div><div><div></div><div></div><div></div></div></div><div><div><div></div><div></div><div></div></div><div><div><div></div><div></div><div></div></div></div></div><div><div><div></div><div></div><div></div></div><div><div><div></div><div></div><div></div></div></div><div><div><div></div><div></div><div></div></div><div><div><div></div><div></div><div></div></div></div></div><div><div><div></div><div></div><div></div></div><div><div><div></div><div></div><div></div></div></div><div><div><div></div><div></div><div></div></div><div><div><div></div><div></div><div></div></div></div></div><div><div><div></div><div></div><div></div></div><div><div><div></div><div></div><div></div></div></div><div><div><div></div><div></div><div></div></div><div><div><div></div><div></div><div></div></div></div></div><div><div><div></div><div></div><div></div></div><div><div><div></div><div></div><div></div></div></div><div><div><div></div><div></div><div></div></div><div><div><div></div><div></div><div></div></div></div></div><div><div><div></div><div></div><div></div></div><div><div><div></div><div></div><div></div></div></div><div><div><div></div><div></div><div></div></div><div><div><div></div><div></div><div></div></div></div></div><div><div><div></div><div></div><div></div></div><div><div><div></div><div></div><div></div></div></div><div><div><div></div><div></div><div></div></div><div><div><div></div><div></div><div></div></div></div></div><div><div><div></div><div></div><div></div></div><div><div><div></div><div></div><div></div></div></div><div><div><div></div><div></div><div></div></div><div><div><div></div><div></div><div></div></div></div></div><div><div><div></div><div></div><div></div></div><div><div><div></div><div></div><div></div></div></div><div><div><div></div><div></div><div></div></div><div><div><div></div><div></div><div></div></div></div></div><div><div><div></div><div></div><div></div></div><div><div><div></div><div></div><div></div></div></div><div><div><div></div><div></div><div></div></div><div><div><div></div><div></div><div></div></div></div></div><div><div><div></div><div></div><div></div></div><div><div><div></div><div></div><div></div></div></div><div><div><div></div><div></div><div></div></div><div><div><div></div><div></div><div></div></div></div></div><div><div><div></div><div></div><div></div></div><div><div><div></div><div></div><div></div></div></div><div><div><div></div><div></div><div></div></div><div><div><div></div><div></div><div></div></div></div></div><div><div><div></div><div></div><div></div></div><div><div><div></div><div></div><div></div></div></div><div><div><div></div><div></div><div></div></div><div><div><div></div><div></div><div></div></div></div></div><div><div><div></div><div></div><div></div></div><div><div><div></div><div></div><div></div></div></div><div><div><div></div><div></div><div></div></div><div><div><div></div><div></div><div></div></div></div></div><div><div><div></div><div></div><div></div></div><div><div><div></div><div></div><div></div></div></div><div><div><div></div><div></div><div></div></div><div><div><div></div><div></div><div></div></div></div></div><div><div><div></div><div></div><div></div></div><div><div><div></div><div></div><div></div></div></div><div><div><div></div><div></div><div></div></div><div><div><div></div><div></div><div></div></div></div></div><div><div><div></div><div></div><div></div></div><div><div><div></div><div></div><div></div></div></div><div><div><div></div><div></div><div></div></div><div><div><div></div><div></div><div></div></div></div></div><div><div><div></div><div></div><div></div></div><div><div><div></div><div></div><div></div></div></div><div><div><div></div><div></div><div></div></div><div><div><div></div><div></div><div></div></div></div></div><div><div><div></div><div></div><div></div></div><div><div><div></div><div></div><div></div></div></div><div><div><div></div><div></div><div></div></div><div><div><div></div><div></div><div></div></div></div></div><div><div><div></div><div></div><div></div></div><div><div><div></div><div></div><div></div></div></div><div><div><div></div><div></div><div></div></div><div><div><div></div><div></div><div></div></div></div></div><div><div><div></div><div></div><div></div></div><div><div><div></div><div></div><div></div></div></div><div><div><div></div><div></div><div></div></div><div><div><div></div><div></div><div></div></div></div></div><div><div><div></div><div></div><div></div></div><div><div><div></div><div></div><div></div></div></div><div><div><div></div><div></div><div></div></div><div><div><div></div><div></div><div></div></div></div></div><div><div><div></div><div></div><div></div></div><div><div><div></div><div></div><div></div></div></div><div><div><div></div><div></div><div></div></div><div><div><div></div><div></div><div></div></div></div></div><div><div><div></div><div></div><div></div></div><div><div><div></div><div></div><div></div></div></div><div><div><div></div><div></div><div></div></div><div><div><div></div><div></div><div></div></div></div></div><div><div><div></div><div></div><div></div></div><div><div><div></div><div></div><div></div></div></div><div><div><div></div><div></div><div></div></div><div><div><div></div><div></div><div></div></div></div></div><div><div><div></div><div></div><div></div></div><div><div><div></div><div></div><div></div></div></div><div><div><div></div><div></div><div></div></div><div><div><div></div><div></div><div></div></div></div></div><div><div><div></div><div></div><div></div></div><div><div><div></div><div></div><div></div></div></div><div><div><div></div><div></div><div></div></div><div><div><div></div><div></div><div></div></div></div></div><div><div><div></div><div></div><div></div></div><div><div><div></div><div></div><div></div></div></div><div><div><div></div><div></div><div></div></div><div><div><div></div><div></div><div></div></div></div></div><div><div><div></div><div></div><div></div></div><div><div><div></div><div></div><div></div></div></div><div><div><div></div><div></div><div></div></div><div><div><div></div><div></div><div></div></div></div></div><div><div><div></div><div></div><div></div></div><div><div><div></div><div></div><div></div></div></div><div><div><div></div><div></div><div></div></div><div><div><div></div><div></div><div></div></div></div></div><div><div><div></div><div></div><div></div></div><div><div><div></div><div></div><div></div></div></div><div><div><div></div><div></div><div></div></div><div><div><div></div><div></div><div></div></div></div></div><div><div><div></div><div></div><div></div></div><div><div><div></div><div></div><div></div></div></div><div><div><div></div><div></div><div></div></div><div><div><div></div><div></div><div></div></div></div></div><div><div><div></div><div></div><div></div></div><div></div></div></div></div></div></div></div></div></div></div></div></div></div></div></div></div></div></div></div></div></div></div></div></div></div></div></div></div></div></div></div></div></div></div></div></div></div></div></div></div></div></div></div></div></div></div></div></div></div></div></div></div></div></div></div></div></div></div></div></div></div></div></div></div></div></div></div></div></div></div></div></div></div></div></div>					
---	--	--	--	--	--

DO NOT SCALE USE FIGURED DIMENSIONS ONLY



LEGEND:

- EXISTING SURFACE RETAINED
- PROPOSED POURED CONCRETE
- PROPOSED ASPHALT
- PROPOSED STONE PAVING
- PROPOSED CONCRETE PAVING
- PROPOSED STONE / CONCRETE SETT PAVING
- PROPOSED SELF-BINDING GRAVEL
- PROPOSED COMMUNITY ENHANCEMENT
- PROPOSED TREES
- RETAINED TREES
- REMOVED TREES
- RETAINED VEGETATION
- REMOVED VEGETATION
- PROPOSED HEDGEROW
- PROPOSED NATIVE PLANTING
- PROPOSED ORNAMENTAL PLANTING
- RETAINED GRASS VERGE AND AMENITY AREAS
- PROPOSED GRASS VERGE AND AMENITY AREAS
- PROPOSED SPECIES RICH GRASS LAND
- SUDS
- SITE BOUNDARY LINE
- TEMPORARY LAND ACQUISITION

NOTE:
PLANT SPECIES, SIZES AND SPACINGS ARE
INDICATIVE OF THE DESIGN INTENT AND SUBJECT
TO AVAILABILITY AND FURTHER GROUND
INVESTIGATION AT DETAIL DESIGN STAGE.

Disclaimer
a. © National Transport Authority (NTA) 2021. This drawing is confidential and the copyright in it is owned by NTA. This drawing must not be either loaned, copied or otherwise reproduced in whole or in part or used for any purpose without the prior permission of NTA.
b. This drawing is to be used for the design element identified in the titlebox. Other information shown is to be considered indicative only. The drawing is to be read in conjunction with all other relevant design drawings.
c. O.S. data used for plans are printed under © Ordnance Survey Ireland Government of Ireland. All rights reserved. Licence Number 2021/OSI_NMA_180 National Transport Authority. All elevations are in metres and relate to OSI Geoid Model (OSGM15) Mean Head. All Co-ordinates are in Irish Transverse Mercator Grid (ITM) as defined by OSI active local GPS station.
d. Information concerning the position of apparatus shown on this drawing is based on drawings supplied by the utility owners and/or the utility works contractor, whilst every care has been taken in the preparation of this drawing, positions should be taken as approximate and are intended for general guidance only and no representation is made by the NTA as to the accuracy, completeness, sufficiency or otherwise of this drawing and the position of the apparatus. The information contained herein does not purport to be comprehensive or final as the apparatus is subject to being altered and/or superceded. Recipients should not rely on this information. Any liabilities are hereby expressly disclaimed.
e. The information contained herein has been provided by the NTA but does not purport to be comprehensive or final. Recipients should not rely on the information. Neither the NTA nor any of its directors, officers, employees, agents, stakeholders or advisers make any representation or warranty as to, or accept any liability or responsibility in relation to, the adequacy, accuracy, reasonableness or completeness of the information provided as part of this document or any matter on which the information is based (including but not limited to loss or damage arising as a result of reliance by recipients on the information or any part of it). Any liabilities are hereby expressly disclaimed.



Rev	Date	Dm	Chk'd	App'd	Description
M01	04/12/21	JN	JH	CA	ISSUE FOR PHASE 4: PLANNING

Údarás Náisiúnta Iompair
National Transport Authority

Date
04/12/21

Project Code
BCIDA

Scale
1:500 @ A1
1:1000 @ A3

Originator Code
ACM

Drawn
J.NELSON

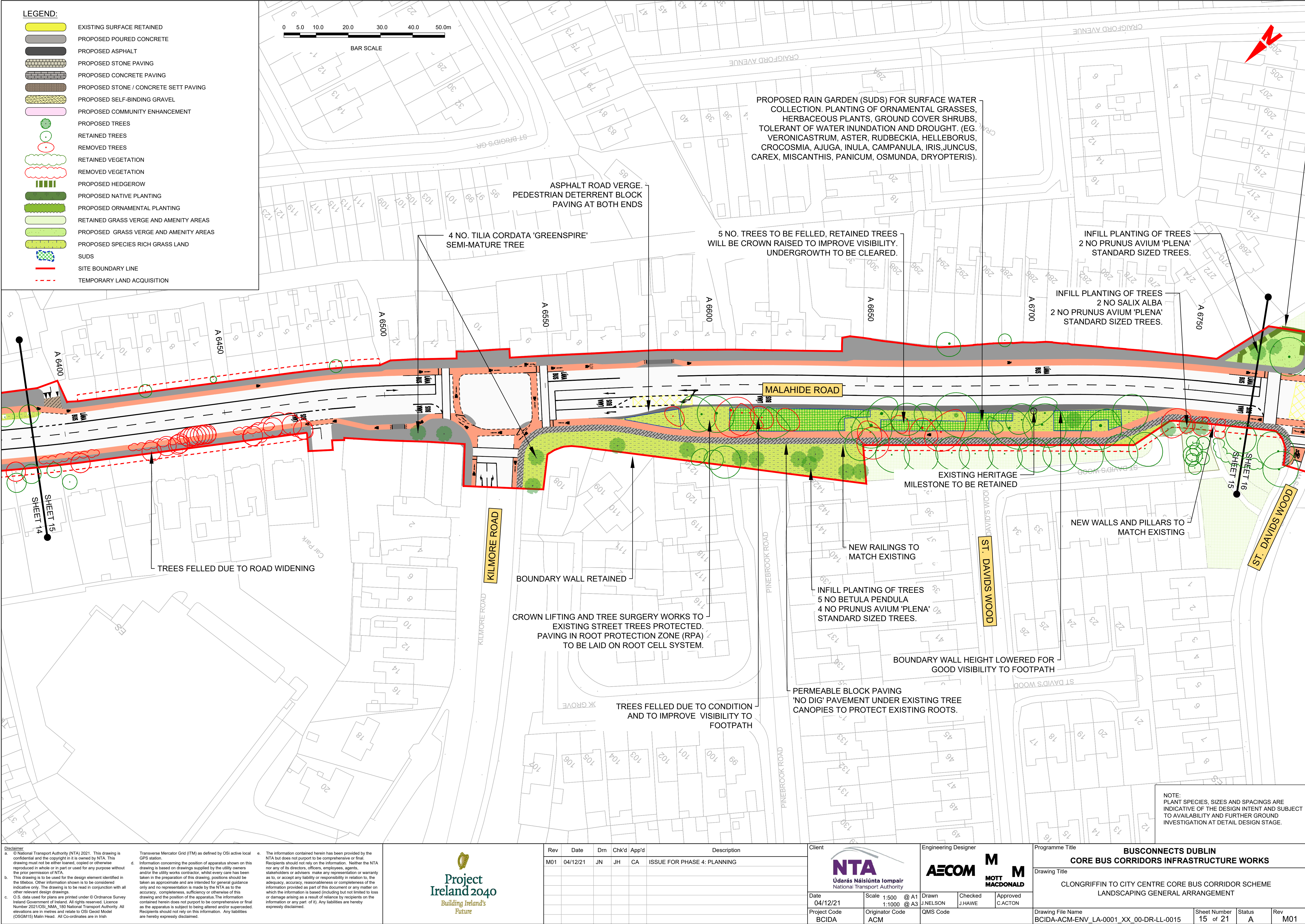
Checked
J.HAWE

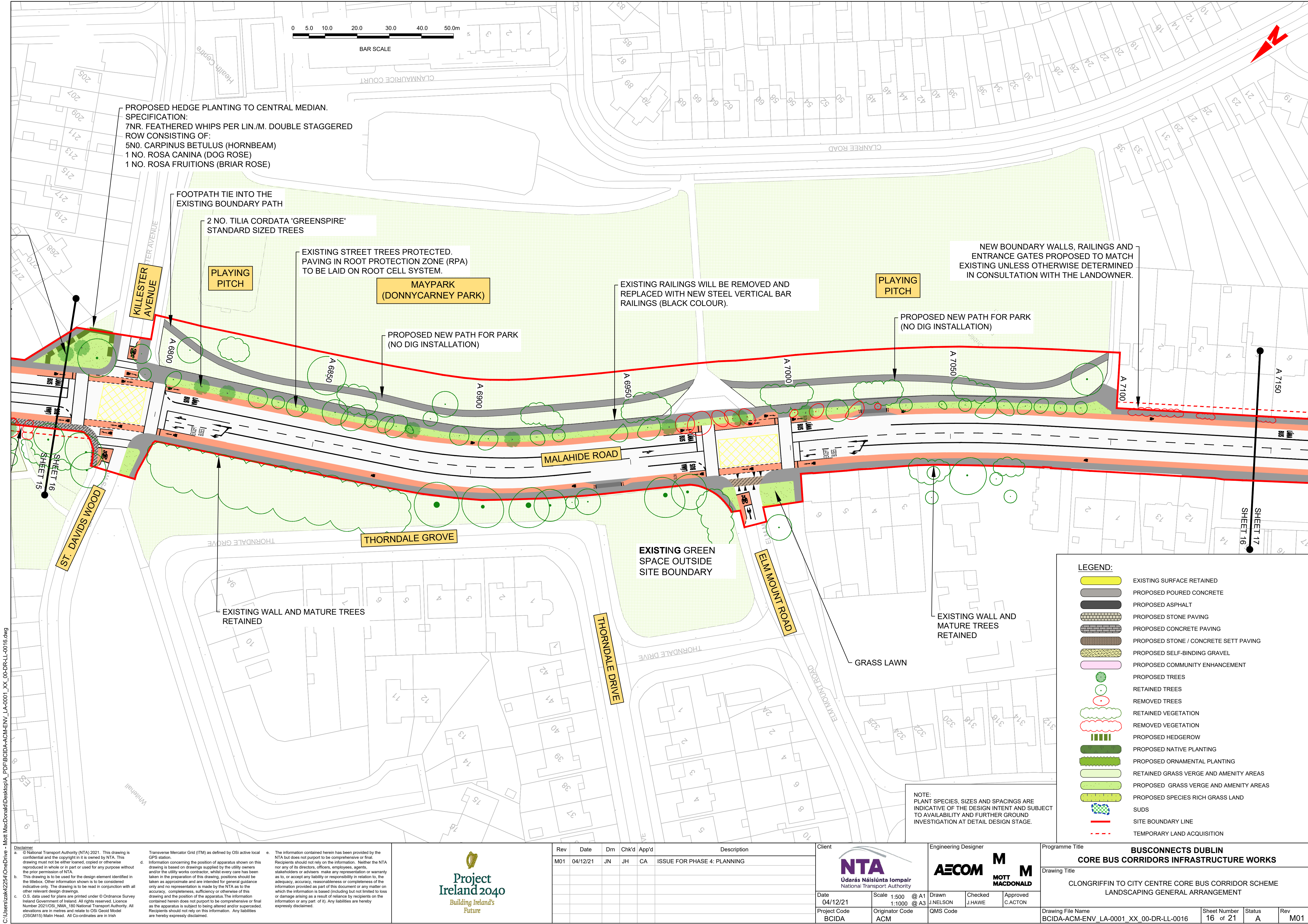
Approved
C.ACTON

Engineering Designer
AECOM

MOTT MACDONALD

Programme Title BUSCONNECTS DUBLIN CORE BUS CORRIDORS INFRASTRUCTURE WORKS			
Drawing Title CLONGRIFFIN TO CITY CENTRE CORE BUS CORRIDOR SCHEME LANDSCAPING GENERAL ARRANGEMENT			
Drawing File Name BCIDA-ACM-ENV_LA-0001_XX_00-DR-LL-0014	Sheet Number 14 of 21	Status A	Rev M01





C:\Users\zak42254\OneDrive - Mott MacDonald\Desktop\A_PDF\BCIDA-ACM-ENV_LA-0001_XX_00-DR-LL-0016.dwg

Disclaimer
a. © National Transport Authority (NTA) 2021. This drawing is confidential and the copyright in it is owned by NTA. This drawing must not be either loaned, copied or otherwise reproduced in whole or in part or used for any purpose without the prior permission of NTA.
b. This drawing is to be used for the design element identified in the titlebox. Other information shown is to be considered indicative only. The drawing is to be read in conjunction with all other relevant design drawings.
c. O.S. data used for plans are printed under © Ordnance Survey Ireland Government of Ireland. All rights reserved. Licence Number 2021/OSI_NMA_180 National Transport Authority. All elevations are in metres and relate to OSI Geoid Model (OSGM15) Mean Head. All Co-ordinates are in Irish Transverse Mercator Grid (ITM) as defined by OSI active local GPS station.
d. Information concerning the position of apparatus shown on this drawing is based on drawings supplied by the utility owners and/or the utility works contractor, whilst every care has been taken in the preparation of this drawing, positions should be taken as approximate and are intended for general guidance only and no representation is made by the NTA as to the accuracy, completeness, sufficiency or otherwise of this drawing and the position of the apparatus. The information contained herein does not purport to be comprehensive or final as the apparatus is subject to being altered and/or superseded. Recipients should not rely on this information. Any liabilities are hereby expressly disclaimed.
e. The information contained herein has been provided by the NTA but does not purport to be comprehensive or final. Recipients should not rely on the information. Neither the NTA nor any of its directors, officers, employees, agents, stakeholders or advisers make any representation or warranty as to, or accept any liability or responsibility in relation to, the adequacy, accuracy, reasonableness or completeness of the information provided as part of this document or any matter on which the information is based (including but not limited to loss or damage arising as a result of reliance by recipients on the information or any part of it). Any liabilities are hereby expressly disclaimed.



Rev	Date	Drm	Chk'd	App'd	Description
M01	04/12/21	JN	JH	CA	ISSUE FOR PHASE 4: PLANNING

Client
NTA
Údarás Náisiúnta Iompair
National Transport Authority

Date: 04/12/21
Scale: 1:500 @ A1
1:1000 @ A3

Project Code: BCIDA
Originator Code: ACM

Engineering Designer
AECOM
J.NELSON
Checked: J.HAWE
Approved: C.ACTON

MOTT MACDONALD

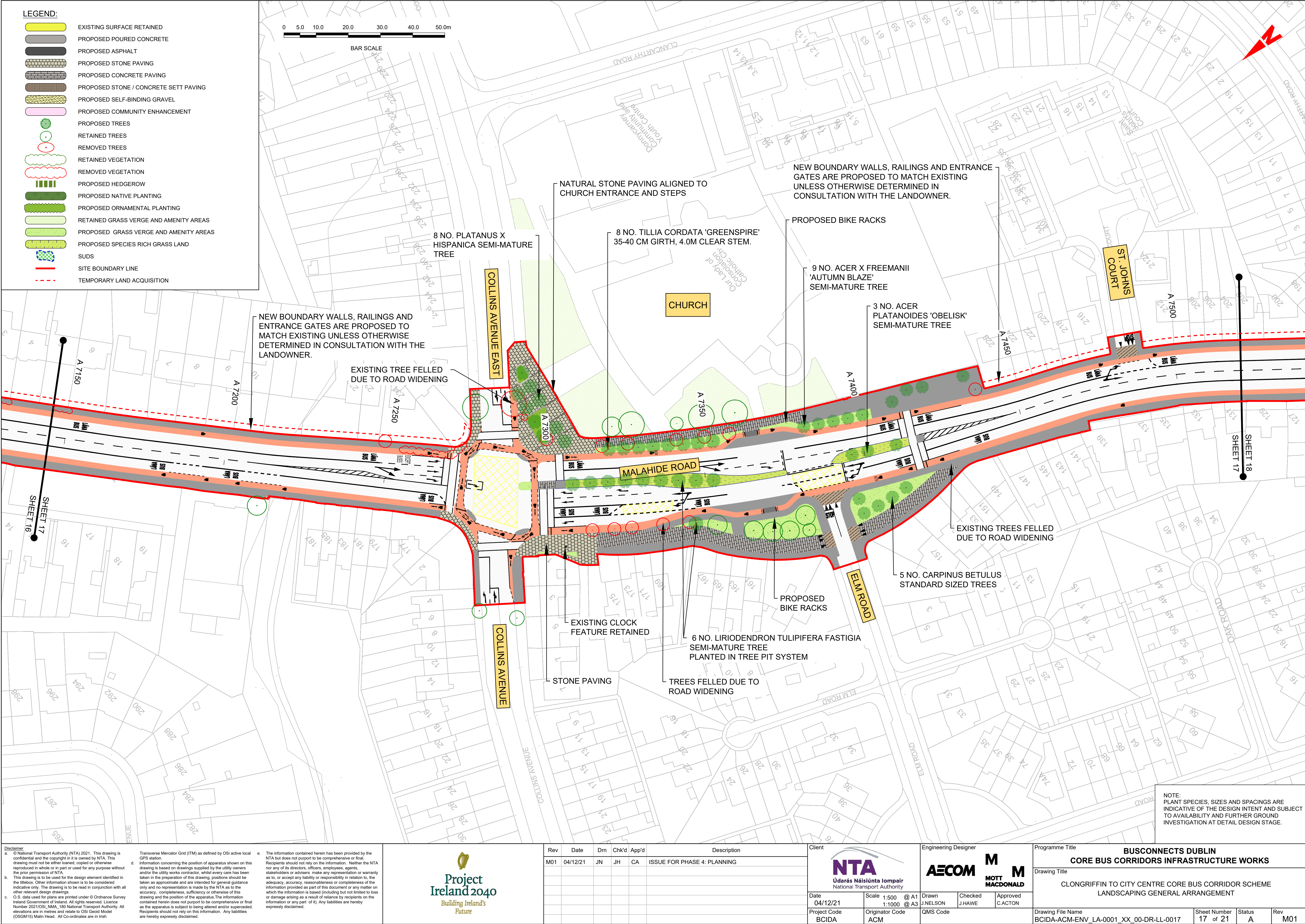
QMS Code

Programme Title
**BUSCONNECTS DUBLIN
CORE BUS CORRIDORS INFRASTRUCTURE WORKS**

Drawing Title
**CLONGRIFFIN TO CITY CENTRE CORE BUS CORRIDOR SCHEME
LANDSCAPING GENERAL ARRANGEMENT**

Drawing File Name: BCIDA-ACM-ENV_LA-0001_XX_00-DR-LL-0016
Sheet Number: 16 of 21
Status: A
Rev: M01

DO NOT SCALE USE FIGURED DIMENSIONS ONLY



C:\Users\zak42254\OneDrive - Mott MacDonald\Desktop\A_PDF\BCIDA-ACM-ENV_LA-0001_XX_00-DR-LL-0017.dwg

Disclaimer
a. © National Transport Authority (NTA) 2021. This drawing is confidential and the copyright in it is owned by NTA. This drawing must not be either loaned, copied or otherwise reproduced in whole or in part or used for any purpose without the prior permission of NTA.
b. This drawing is to be used for the design element identified in the titlebox. Other information shown is to be considered indicative only. The drawing is to be read in conjunction with all other relevant design drawings.
c. O.S. data used for plans are printed under © Ordnance Survey Ireland Government of Ireland. All rights reserved. Licence Number 2021/OSI_NMA_180 National Transport Authority. All elevations are in metres and relate to OSI Geoid Model (OSGM15) Mean Head. All Co-ordinates are in Irish Transverse Mercator Grid (ITM) as defined by OSI active local GPS station.
d. Information concerning the position of apparatus shown on this drawing is based on drawings supplied by the utility owners and/or the utility works contractor, whilst every care has been taken in the preparation of this drawing, positions should be taken as approximate and are intended for general guidance only and no representation is made by the NTA as to the accuracy, completeness, sufficiency or otherwise of this drawing and the position of the apparatus. The information contained herein does not purport to be comprehensive or final as the apparatus is subject to being altered and/or superseded. Recipients should not rely on this information. Any liabilities are hereby expressly disclaimed.
e. The information contained herein has been provided by the NTA but does not purport to be comprehensive or final. Recipients should not rely on the information. Neither the NTA nor any of its directors, officers, employees, agents, stakeholders or advisers make any representation or warranty as to, or accept any liability or responsibility in relation to, the adequacy, accuracy, reasonableness or completeness of the information provided as part of this document or any matter on which the information is based (including but not limited to loss or damage arising as a result of reliance by recipients on the information or any part of it). Any liabilities are hereby expressly disclaimed.

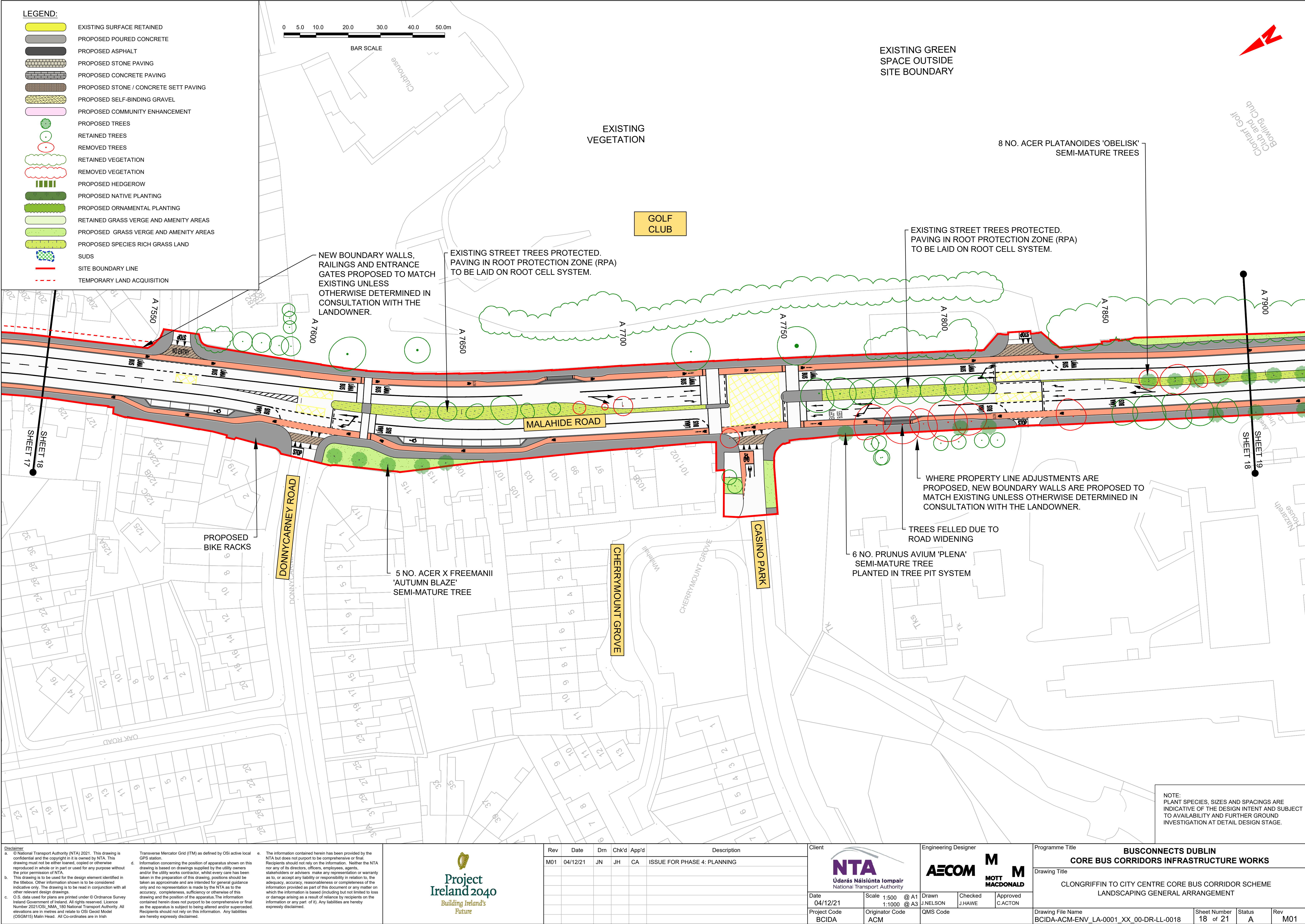


Rev	Date	Drm	Chk'd	App'd	Description
M01	04/12/21	JN	JH	CA	ISSUE FOR PHASE 4: PLANNING

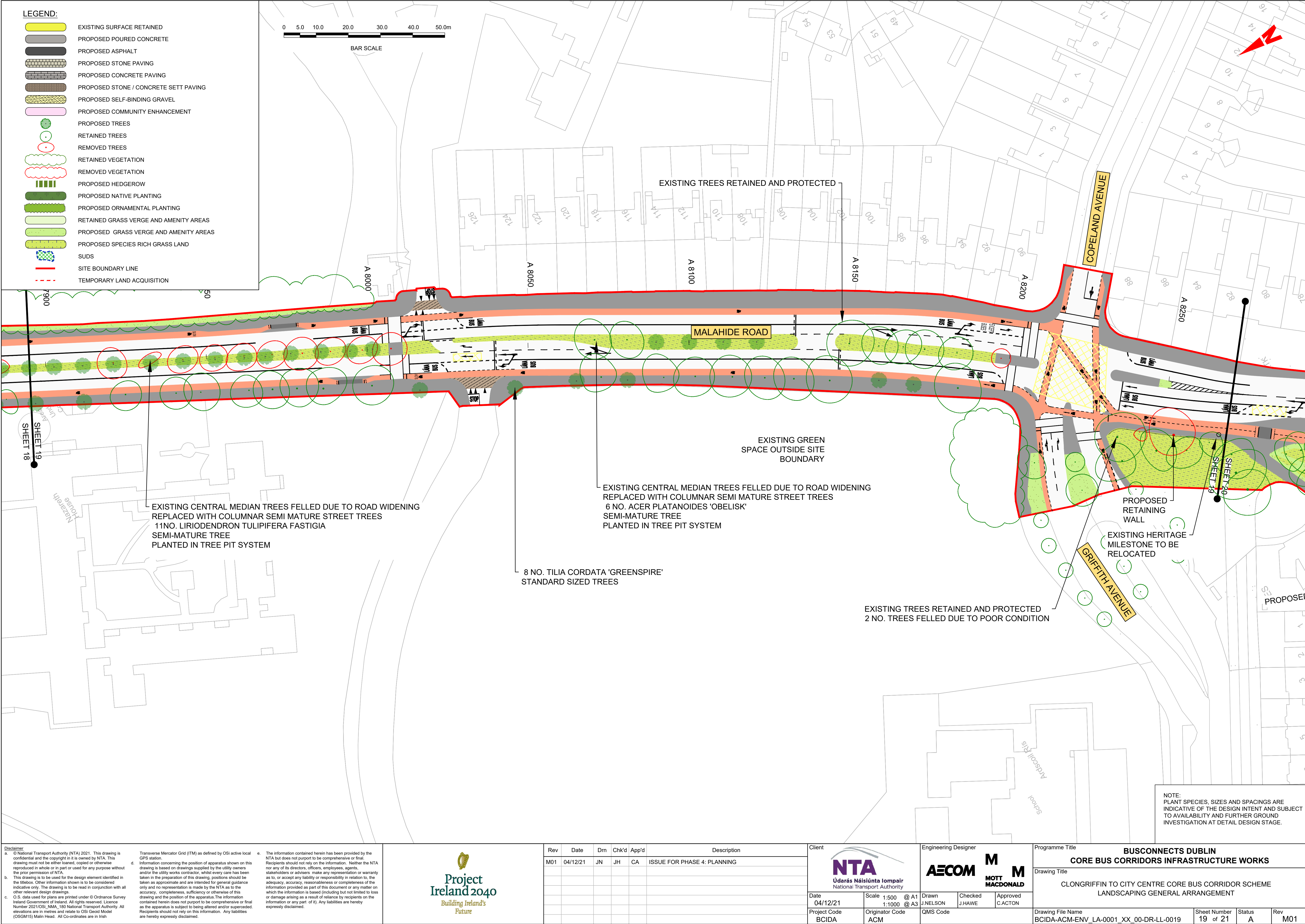
Client		Engineering Designer	
NTA Udarás Náisiúnta Iompair National Transport Authority		AECOM MOTT MACDONALD	
Date 04/12/21	Scale 1:500 @ A1 1:1000 @ A3	Drawn J.NELSON	Checked J.HAWE
Project Code BCIDA	Originator Code ACM	Approved C.ACTON	
QMS Code			

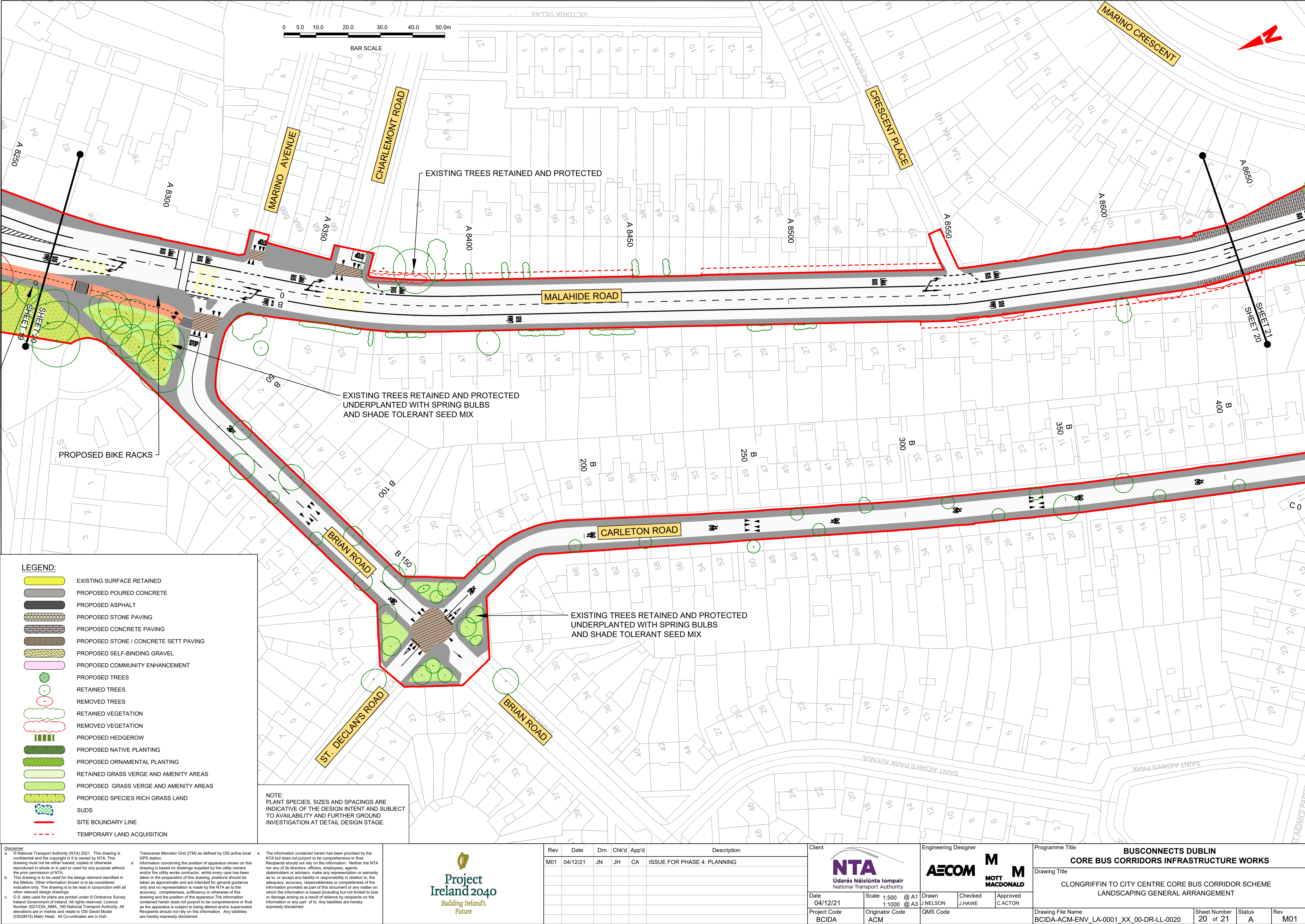
Programme Title BUSCONNECTS DUBLIN CORE BUS CORRIDORS INFRASTRUCTURE WORKS			
Drawing Title CLONGRIFFIN TO CITY CENTRE CORE BUS CORRIDOR SCHEME LANDSCAPING GENERAL ARRANGEMENT			
Drawing File Name BCIDA-ACM-ENV_LA-0001_XX_00-DR-LL-0017	Sheet Number 17 of 21	Status A	Rev M01

DO NOT SCALE USE FIGURED DIMENSIONS ONLY



C:\Users\zak42254\OneDrive - Mott MacDonald\Desktop\A_PDF\BCIDA-ACM-ENV_LA-0001_XX_00-DR-LL-0018.dwg







C:\Users\zak42254\OneDrive - Mott MacDonald\Desktop\A_PDF\BCIDA-ACM-ENV_LA-0001_XX_00-DR-LL-0020.dwg

Disclaimer
a. © National Transport Authority (NTA) 2021. This drawing is confidential and the copyright in it is owned by NTA. This drawing must not be either loaned, copied or otherwise reproduced in whole or in part or used for any purpose without the prior permission of NTA.
b. This drawing is to be used for the design element identified in the titlebox. Other information shown is to be considered indicative only. The drawing is to be read in conjunction with all other relevant design drawings.
c. O.S. data used for plans are printed under © Ordnance Survey Ireland Government of Ireland. All rights reserved. Licence Number 2021/OSI_NMA_180 National Transport Authority. All elevations are in metres and relate to OSI Geoid Model (OSGM15) Mean Head. All Co-ordinates are in Irish Transverse Mercator Grid (ITM) as defined by OSI active local GPS station.
d. Information concerning the position of apparatus shown on this drawing is based on drawings supplied by the utility owners and/or the utility works contractor, whilst every care has been taken in the preparation of this drawing, positions should be taken as approximate and are intended for general guidance only and no representation is made by the NTA as to the accuracy, completeness, sufficiency or otherwise of this drawing and the position of the apparatus. The information contained herein does not purport to be comprehensive or final as the apparatus is subject to being altered and/or superceded. Recipients should not rely on this information. Any liabilities are hereby expressly disclaimed.
e. The information contained herein has been provided by the NTA but does not purport to be comprehensive or final. Recipients should not rely on the information. Neither the NTA nor any of its directors, officers, employees, agents, stakeholders or advisers make any representation or warranty as to, or accept any liability or responsibility in relation to, the adequacy, accuracy, reasonableness or completeness of the information provided as part of this document or any matter on which the information is based (including but not limited to loss or damage arising as a result of reliance by recipients on the information or any part of it). Any liabilities are hereby expressly disclaimed.



Rev	Date	Dm	Chk'd	App'd	Description
M01	04/12/21	JN	JH	CA	ISSUE FOR PHASE 4: PLANNING

Client	
 Udarás Náisiúnta Iompair National Transport Authority	
Date	04/12/21
Scale	1:500 @ A1 1:1000 @ A3
Project Code	BCIDA
Originator Code	ACM

Engineering Designer	
 	
Drawn	J.NELSON
Checked	J.HAWE
Approved	C.ACTON
QMS Code	

Programme Title			
BUSCONNECTS DUBLIN CORE BUS CORRIDORS INFRASTRUCTURE WORKS			
Drawing Title			
CLONGRIFFIN TO CITY CENTRE CORE BUS CORRIDOR SCHEME LANDSCAPING GENERAL ARRANGEMENT			
Drawing File Name	BCIDA-ACM-ENV_LA-0001_XX_00-DR-LL-0020	Sheet Number	20 of 21
Status	A	Rev	M01

DO NOT SCALE USE FIGURED DIMENSIONS ONLY

